

Rope Deck Pipes, Step Plate, and Fixed Steps

Rope Deck Pipe

- Material: High Impact, U.V. Stabilized, Fiber Reinforced Polymer
 Finish: Black or White
 Dimensions: O.D. Flange: 3-3/4"
 Max. Rope Size: 7/8"
 Screw Size: #8
 Features:
 - Hinged, Snap-Down Cover
 - Hinge Design Allows Open Cover to Lay Flat

Color	Retail Pkg.	OEM Bulk Pkg.
Black	1057DP0BLK	1057000BLK
White	1057DP0WHT	1057000WHT



Fig. 1057 White

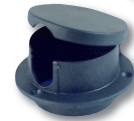


Fig. 1057 Black

Rope Deck Pipe

- Material: Zinc Alloy
 Finish: Chrome Plated
 Dimensions: O.D. Flange: 3-3/8"
 Max. Rope Size: 1"
 Screw Size: #8
 Features: Hinged Cover

Retail Pkg.	OEM Bulk Pkg.
0757DP0CHR	0757000CHR



Fig. 0757

Step Plate

- Material: Zinc Alloy Frame with Soft Polymer Pads
 Finish: Chrome Plated Frame and Black Pad
 Screw Size: #8

Dimensions	Retail Pkg.	OEM Bulk Pkg.
8-3/8" x 2-1/4"	1325DP0CHR	1325000CHR
8-3/4" x 3-1/4"	1325DP1CHR	1325001CHR

Sold in pairs.

Spare Pads for Size No. 0: 1050DP0BLK
 Spare Pads for Size No. 1: 1050DP1BLK

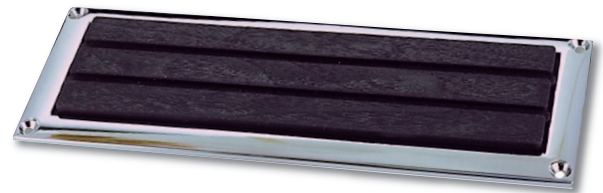


Fig. 1325

Fixed Steps and Handle

- Material: Bronze
 Finish: Chrome Plated
 Bolt Size: 5/16 R.H.



Fig. 0501



Fig. 0351

Dimensions Step	Dimensions Bracket	Retail Pkg.	Standard Pkg.
6" x 4-1/4"	6" x 2"	0351DP0CHR	-----
11" x 4-1/2"	11" x 2"	-----	0501000CHR

